

Willow ID 2

***Salix geyeriana* (Geyer's Willow)**

Drainage: Rock Creek

Sites: Pine Grove Campground

Collection Site/Date: 06/23/23

-Growing along the parking lot area of the campground, where we conducted a beetle survey. It is on the way to Mosquito Flat and Heart Lake sites.

Salicylate Level/Taste:

Elevation/range:

Pistillate Catkins:

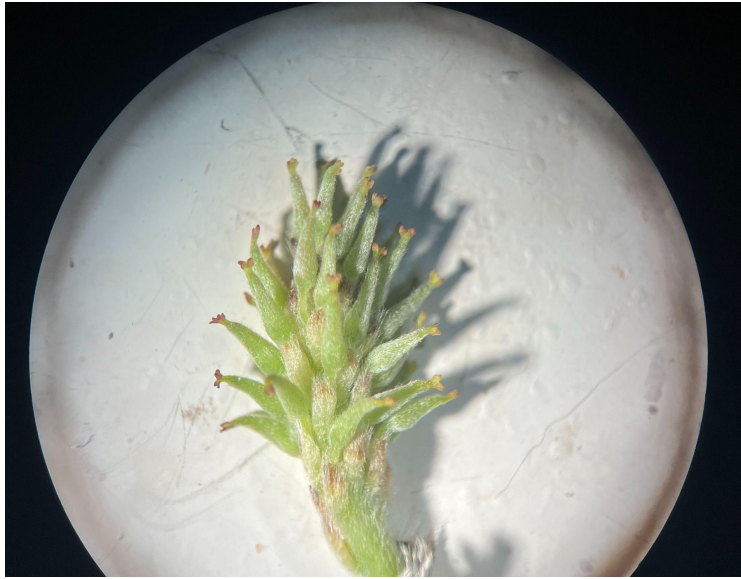
-Ovary (and gen fr, at least when fr young) hairy (sometimes hairy only on beak or when ovary young)



S. geyeriana pistillate catkin with hairy ovaries. Photo AB.

-Low to tall shrub to tree, not forming mats, not alpine

-Fl bracts persistent, black, brown, or \pm tan, gen moderately to densely hairy



S. geyeriana pistillate catkin showing persistent, hairy bracts subtending the flowers, with brown to tan coloration.. Photo AB.

- Catkins blooming before lvs (sometimes \pm so), sessile or on bracted shoots, rarely on lfy shoots to 5 mm



An *S. geyeriana* shoot showing the catkins blooming before leaves, particularly more or less so as the budding leaves and catkins develop simultaneously. Photo AB.



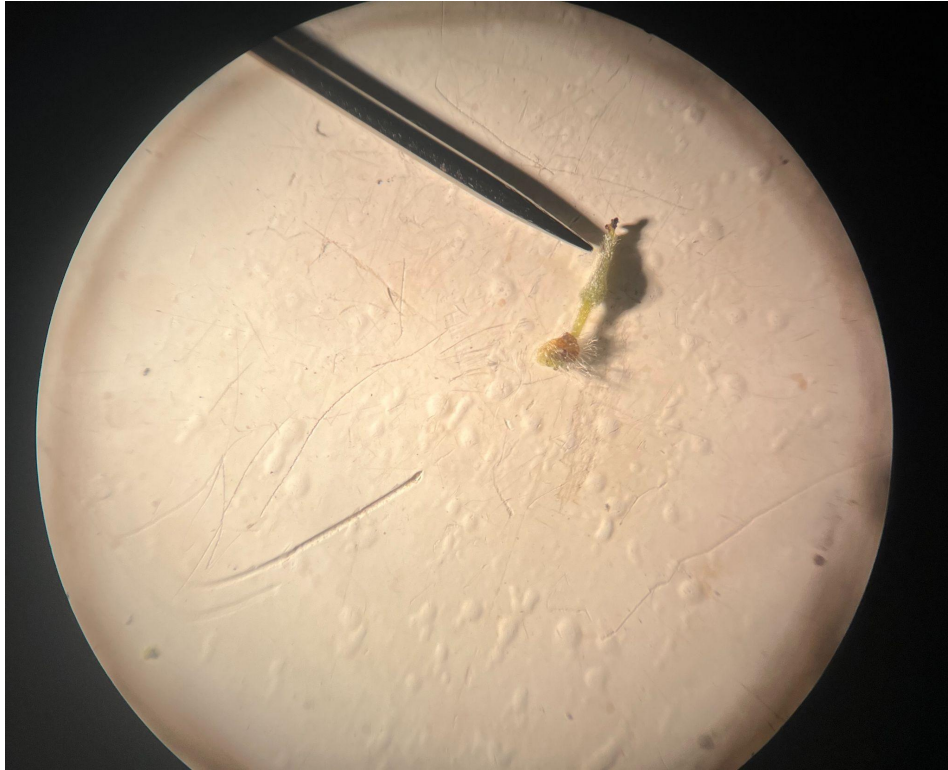
Closeup of an *S. geeyeriana* catkin removed from the twig, showing the characteristic of the catkin on bracted shoots, rarely on leafy shoots to 5 mm. The catkin appears to be borne on a bracted or leafy shoot 5 mm in length. The ruler is in cm and shown for scale. Photo AB.

- Fl bract \pm tan or light rose

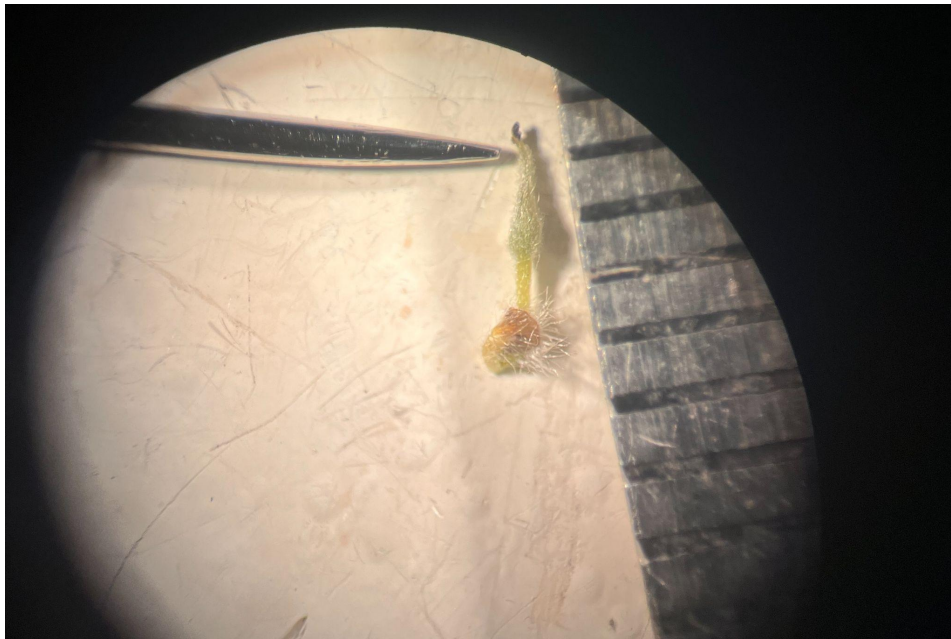


Closeup of an *S. geeyeriana* catkin showing the tan to rose coloration of the bracts subtending the flowers. Photo AB.

- Fl bract sparsely hairy; ovary sparsely or moderately silky, long-beaked; style 0.1–0.4 mm



An individual *S. geyeriana* flower with the pointer showing the long beak morphology. A beak is the generally distal or terminal, narrowed, generally sterile part of fruit or surrounding structures. Photo AB.



An individual *S. geyeriana* flower with the pointer at the style just below the terminal brown stigma. The style is 0.1–0.4 mm. The ruler is in cm for scale, with each tick mark representing one mm.

